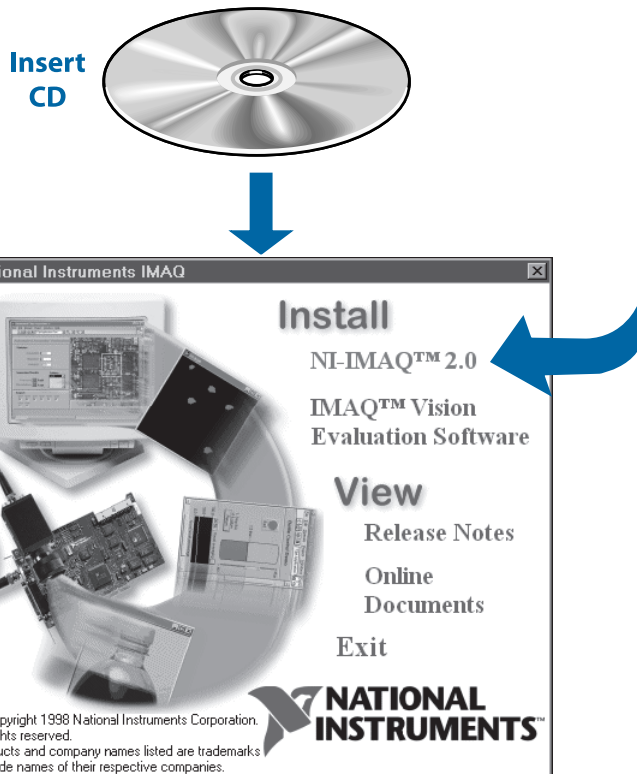


# Setup and Test the PCI/PXI-1408

## 1 Install Your Software



**Need more information?**  
See the *IMAQ PCI/PXI-1408 User Manual*.

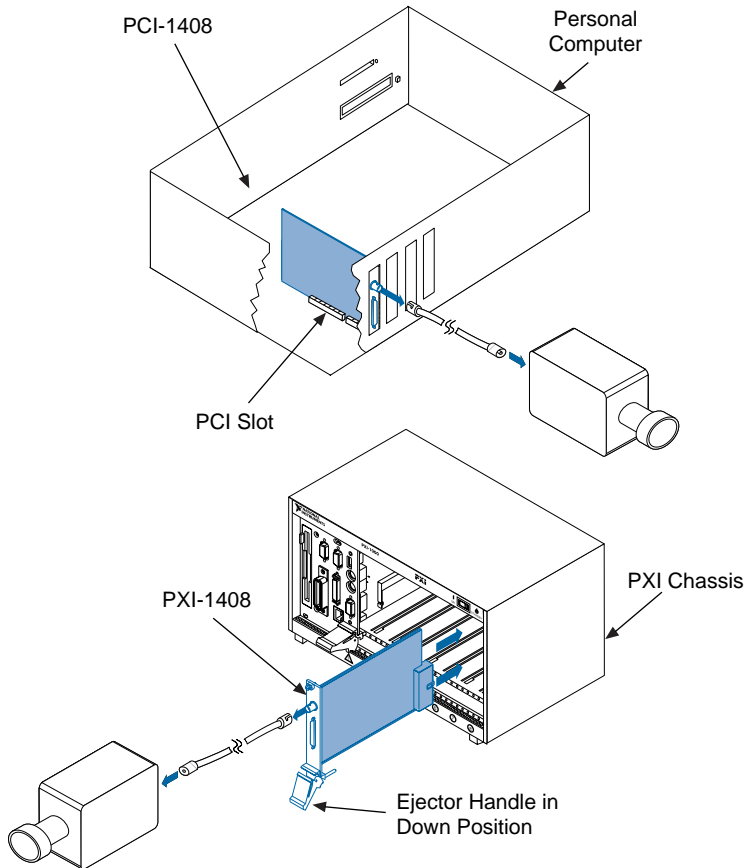
# 2

## Install Your PCI/PXI-1408 and Connect Your Camera



**Caution**

**Turn the power off before installing your hardware.**



**Note**

**Follow the instructions in your computer documentation to install the PCI/PXI-1408 device.**

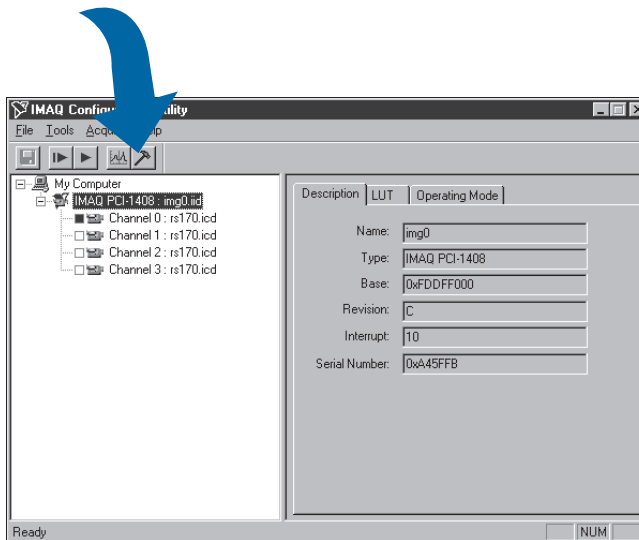
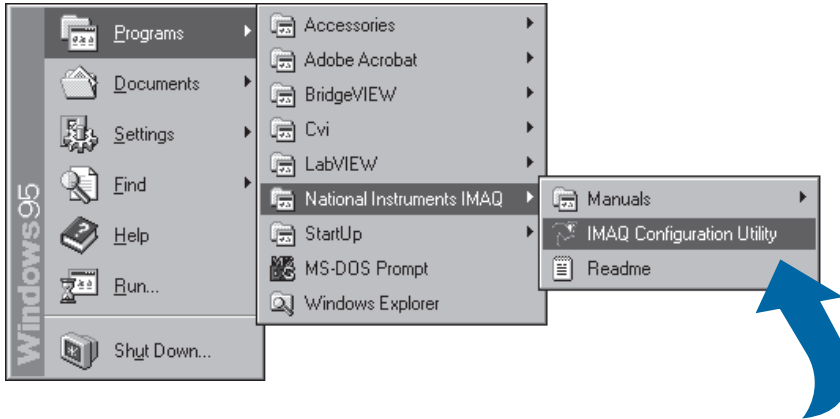


**Need more information?**

**See the *IMAQ PCI/PXI-1408 User Manual*.**

# 3

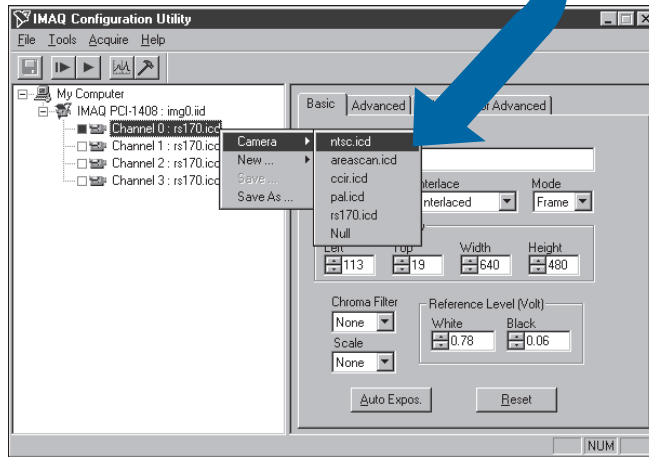
## Run the IMAQ Configuration Utility and the IMAQ Diagnostics



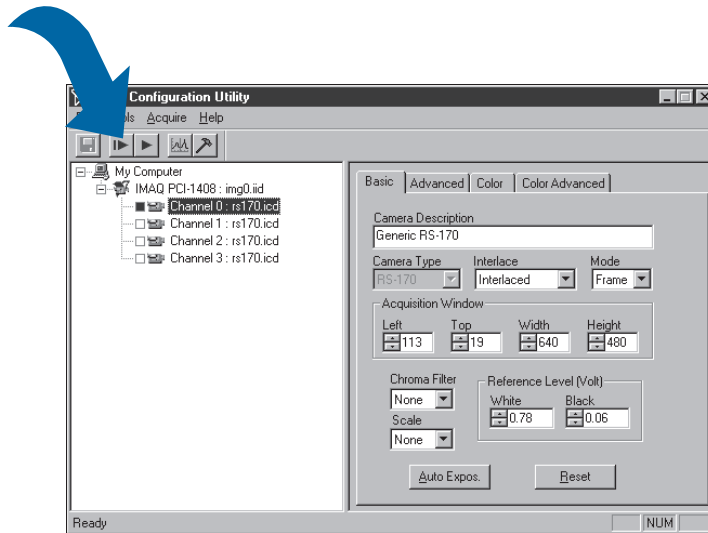
**Need more information?**  
See the IMAQ Configuration Utility online help.

# 4

## Select the Camera File and Acquire an Image



Click on the channel using the right mouse button.



**Need more information?**  
See the IMAQ Configuration Utility online help.

